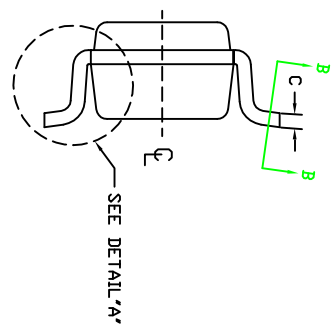
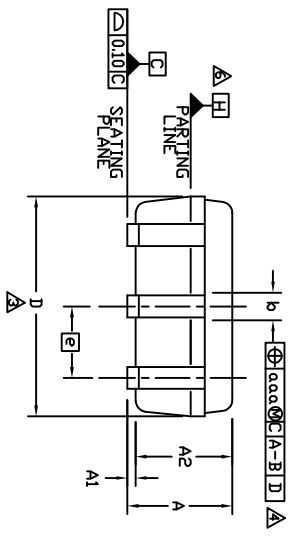


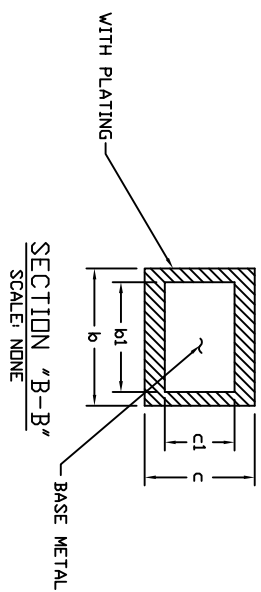
TOP VIEW



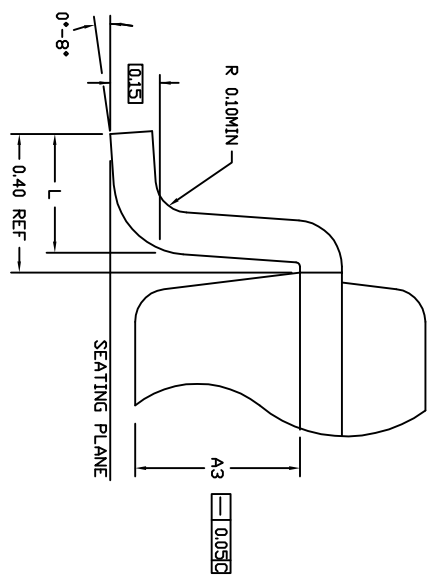
END VIEW



SIDE VIEW



SECTION "B-B"
SCALE: NONE



DETAIL "A"
SCALE: 3/1


 SPECTRALINEAR INC.
 2500 LAURELWOOD
 SANTA CLARA, CA
 95054
 TEL: 408-855-0555
 FAX: 408-855-0550

TITLE:
 PDD for 6L SC70K(2.0X1.3)MM,
 0.65MM PITCH

DATE:
 07/07/08

DOCUMENT NO. SL/PDD-00021
 REV. A. Page 1 of 3

NOTES :

1. DIMENSIONING AND TOLERANCES PER ASME, Y14.5M-1994
2. ALL DIMENSIONS ARE IN MILLIMETER.
3. DIMENSION 'D' DOES NOT INCLUDE MOLD FLASH, PROTRUSIONS, OR GATE BURRS AND SHALL NOT EXCEED 0.15mm PER END. DIMENSION 'E1' DOES NOT INCLUDE MOLD FLASH, PROTRUSIONS, OR GATE BURRS AND SHALL NOT EXCEED 0.15mm PER SIDE.
4. THE LEAD WIDTH DIMENSION DOES NOT INCLUDE DAMBAR PROTRUSION. ALLOWABLE DAMBAR PROTRUSION SHALL BE 0.07MM TOTAL IN EXCESS OF THE LEAD WIDTH DIMENSION AT MAXIMUM MATERIAL CONDITION.
5. DATUM 'A-B' AND 'D' TO BE DETERMINED 0.10 MM FROM THE LEAD TIP.
6. TERMINAL POSITIONS ARE SHOWN FOR REFERENCE ONLY.
7. THESE DIMENSIONS ARE APPLY TO THE FLAT SECTION OF THE LEAD BETWEEN 0.08MM AND 0.15 FROM THE LEAD TIP.

SYMBOLS	MIN	NDM	MAX	NOTE
A	-	-	1.00	
A1	0.025	0.075	0.10	
A2	0.850	0.88	0.90	
A3		0.50 BSC		
b	0.15	-	0.30	8
b1	0.15	0.20	0.25	8
c	0.10	-	0.20	8
c1	0.10	0.127	0.15	8
D	1.90	2.00	2.10	3,5
E		2.10 BSC		
E1	1.25	1.30	1.35	4,5
L	0.26	0.36	0.46	
e1		1.30 BSC		
e		0.65 BSC		
N		5		6,7
aaa		0.10		6,7

8. DATUM PLANE 'H' LOCATED AT MOLD PARTING LINE AND COINCIDENT WITH LEAD, WHERE LEAD EXITS PLASTIC BODY AT THE BOTTOM OF PARTING LINE.
9. FORMED LEADS SHALL BE PLANAR WITH RESPECT TO ONE ANOTHER WITH 0.10 MM AT SEATING PLANE.
10. DIE THICKNESS ALLOWABLE IS 0.203±0.0127 (0.0080±0.0005 INCHES)
11. PACKAGES MANUFACTURED TO THIS PACKAGE OUTLINE ARE COMPLIANT WITH JEDEC SPECIFICATION MD-203 EXCEPT FOR THE 'E1' PACKAGE BODY WIDTH HAS BEEN INCREASED FROM 1.25 TO 1.30 MM BSC TO ACCOMMODATE LARGER DIE SIZES. THE POSITIONAL TOLERANCE REQUIREMENT OF 0.15 IN MD-203 HAS BEEN REDUCED TO 0.10MM FOR 5L & 6L AND 0.08 FOR 8L FOR THE LARGER NOMINAL IN THIS PACKAGE OUTLINE, THEREFORE OUR PACKAGES FALL WITHIN THE PRESENT MD-203 LIMITATION OF 'E1' NOMINAL PLUS THE POSITIONAL TOLERANCE.



TITLE:
 PDD for 6L SC70(2.0X1.3)MM,
 0.65MM PITCH

DATE:

07/07/08

DOCUMENT NO. SL/PDD-00021

REV. A

Page 2 of 3



Document History Page

Document Title: POD for 6L SC70(2.0X1.3)MM, 0.65MM PITCH
Document Number: SL/POD-00021 Rev. A

Rev.	ECR No.	Date	Orig. of Change	Description of Change
A	ECR-690	7/7/2008	RP	NEW RELEASE