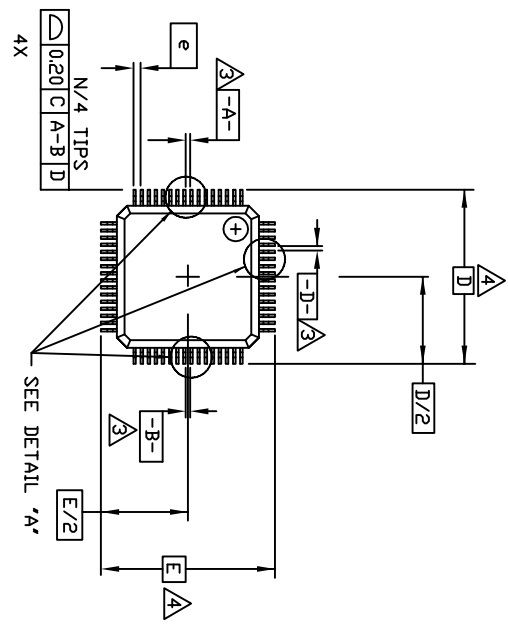
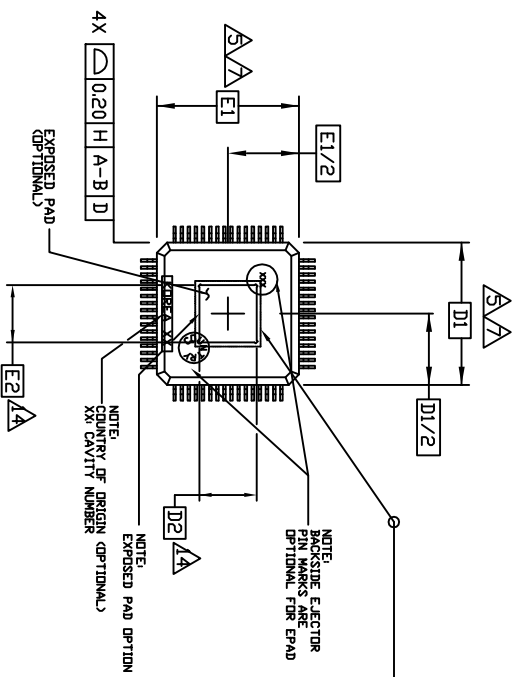


TOP VIEW

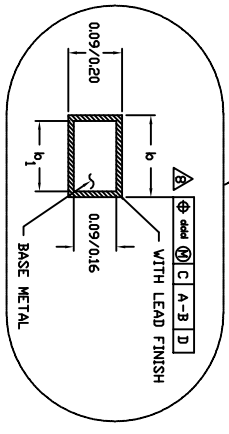
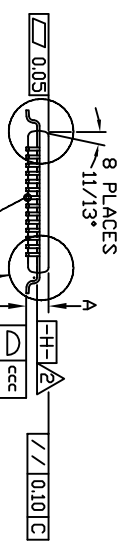
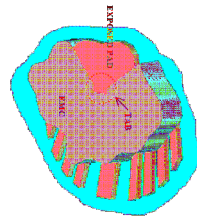


BOTTOM VIEW

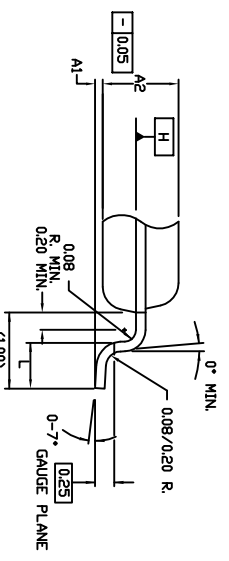


Ø0.20 TAB

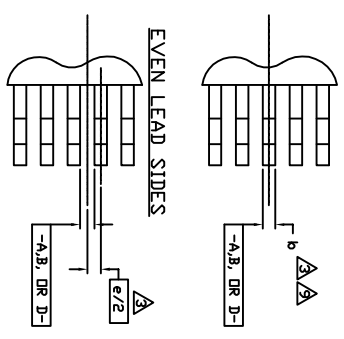
- TAB : EXPOSED PART OF CONNECTION BAR OR TIE BAR
 - EXPOSED PAD SIZE IS AFFECTED BY MOLD FLASH AND
 MOLD FLASH IS CONTROLLED BY FVIGFANAL VISUAL INSPECTION) SPEC



DETAIL "B"



DETAIL "A"



TITLE:
 POD for 32LD TQFP (7X7 MM),
 0.80MM PITCH

DATE:
 08/06/08

DOCUMENT NO.
 REV. A

SL/POD-00030
 Page 1 of 3

NOTES:

1. ALL DIMENSIONING AND TOLERANCING CONFORM TO ASME Y14.5M-1994.
2. DATUM PLANE [H-H] LOCATED AT MOLD PARTING LINE AND COINCIDENT WITH LEAD, WHERE LEAD EXITS PLASTIC BODY AT BOTTOM OF PARTING LINE.
3. DATUMS [A-B] AND [D-D] TO BE DETERMINED AT CENTERLINE BETWEEN LEADS WHERE LEADS EXIT PLASTIC BODY AT DATUM PLANE [H-H].
4. TO BE DETERMINED AT SEATING PLANE [C-C].
5. DIMENSIONS D1 AND E1 DO NOT INCLUDE MOLD PROTRUSION, ALLOWABLE MOLD PROTRUSION IS 0.254 MM DN D1 AND E1 DIMENSIONS.
6. 'N' IS THE TOTAL NUMBER OF TERMINALS.
7. THESE DIMENSIONS TO BE DETERMINED AT DATUM PLANE [H-H].
8. PACKAGE TOP DIMENSIONS ARE SMALLER THAN BOTTOM DIMENSIONS AND TOP OF PACKAGE WILL NOT OVERHANG BOTTOM OF PACKAGE.
9. DIMENSION b DOES NOT INCLUDE DAMBAR PROTRUSION, ALLOWABLE DAMBAR PROTRUSION SHALL BE 0.08mm TOTAL IN EXCESS OF THE b DIMENSION AT MAXIMUM MATERIAL CONDITION, DAMBAR CANNOT BE LOCATED ON THE LOWER RADIUS OR THE FOOT.
10. CONTROLLING DIMENSION: MILLIMETER.
11. MAXIMUM ALLOWABLE DIE THICKNESS TO BE ASSEMBLED IN THIS PACKAGE FAMILY IS 0.38 MILLIMETERS.
12. THIS OUTLINE CONFORMS TO JEDEC PUBLICATION 95 REGISTRATION MS-026, VARIATION ABA, ABC, & ABD.
13. A1 IS DEFINED AS THE DISTANCE FROM THE SEATING PLANE TO THE LOWEST POINT OF THE PACKAGE BODY.
14. DIMENSION D2 AND E2 REPRESENT THE SIZE OF THE EXPOSED PAD, THE ACTUAL DIMENSIONS ARE SPECIFIED ON THE BONDING DIAGRAM, AND IS DEPENDENT ON THE DIE SIZE.
15. EXPOSED PAD SHALL BE COPLANAR WITH BOTTOM OF PACKAGE WITHIN 0.05.

SYMBOL	JEDEC VARIATION ALL DIMENSIONS IN MILLIMETERS			N D T E
	ABA	ABD	ABE	
A	MIN.	NOM.	MAX.	
A ₁	~	~	1.20	13
A ₂	0.05	~	0.15	
	0.95	1.00	1.05	
D	9.00 BSC.			4
D ₁	7.00 BSC.			7,8
E	9.00 BSC.			4
E ₁	7.00 BSC.			7,8
L	0.45	0.60	0.75	
N	32			
e	0.80 BSC.			
b	0.30	0.37	0.45	9
b ₁	0.30	0.35	0.40	
ccc	~	~	0.10	
ddd	~	~	0.20	



SPECTRALINEAR INC.
2200 LAURELWOOD RD.
SANTA CLARA, CA
TEL: 408-565-0555
FAX: 408-565-0560

TITLE:
POD for 32LD TOFP (7X7 MM),
0.80MM PITCH

DATE:

08/06/08

DOCUMENT NO.

REV. A

SL/POD-00030



Document History Page

Document Title: POD for 32LD TQFP (7X7 MM), 0.80MM PITCH

Document Number: SL/POD-00030 Rev. A

Rev.	ECR No.	Date	Orig. of Change	Description of Change
A	ECR-726	8/6/2008	RP	NEW RELEASE